

PATHFINDER EXPEDITION

20 PARR STATE CONSERVATION AREA 25
GREATER SYDNEY CONFERENCE



PRE LOG



WHAT TO EXPECT

We're excited to have you committed to the Pathfinder Expedition from June 6-8th, 2025! The expedition will take place within the stunning Parr State Conservation Area, bordering the Womerah Range Trail. This area offers beautiful ridges, creeks, and breathtaking views, making it a perfect setting for the Pathfinders to explore. You'll also experience remote wilderness and immerse yourself in the unique Aboriginal cultural heritage of the region.

The expedition will cater to a variety of skill levels, including beginner, basic, intermediate, advanced, and super challenge. It's an excellent opportunity to enhance your Pathfinder skills, particularly in map reading and compass navigation. The essence of this expedition is preparation. In this Pre-Log, you'll find a packing list, along with suggested walking routes tailored to different levels of walking experience. As you get ready for the expedition, it's important to ensure you have the right equipment, clothing, and food. Equally, please don't forget to physically prepare yourself for the journey ahead.

Our spiritual focus for this expedition will be the theme, "Go where He sends." We will dive into the life of Jonah and reflect on how God's call came to him. As we explore Jonah's journey, we will gain insight into his thoughts and experiences as he faced the challenge of travelling to Nineveh. As part of your preparation, we encourage you to read Jonah chapters 1 through to 4 in the bible to better understand the spiritual lessons we will explore.

We look forward to seeing you at the Pathfinder Expedition, June 6th-8th, 2025.

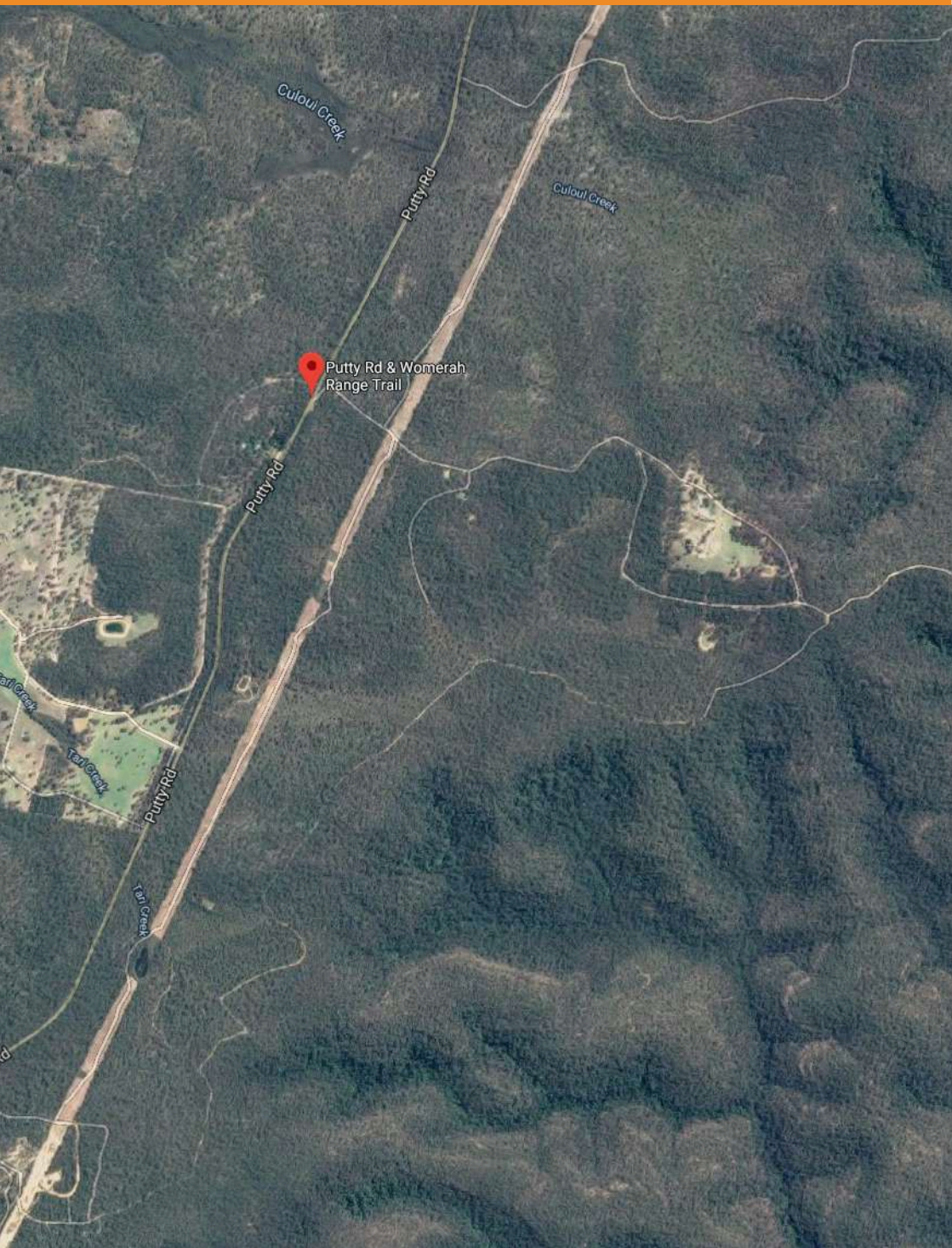
TRAVEL INSTRUCTIONS

Expedition Check In will commence on the 6th of June, from 4 PM- 9.30 PM. Please coordinate with your club to ensure arrival within this designated timeframe, as check in is only available on Friday. All expedition staff will be occupied with other expedition duties. The Expedition Base Camp will be located at Elim Heights Youth Camp. Access to the site is via the Womerah Range Trail (please refer to the map on the following page).

Street address is: 5760 Putty Road, Colo Heights, NSW, 2756. Womerah Range Trail.

NOTE: Putty Road spans 57 kilometres and will take approximately 44 minutes to reach the campsite. Look for the signs at the entrance of Womerah Range Trail to guide you to the base camp.

MAP TO EXPEDITION



WHAT TO BRING

- ☐ Everything must fit into a backpack
- ☐ Clothes for hiking-long sleeve shirt and long pants (no shorts)
- ☐ Tent (for single person or shared between group)
- ☐ Water (min. of 2ltrs a day for each participant)
- ☐ Food
- ☐ Spare set of clothes in case first set get wet
- ☐ Clothes for sleeping-something warm
- ☐ Socks & underwear (one pair per day)
- ☐ Hiking boots or shoes
- ☐ Waterproof windbreaker/jacket
- ☐ Hat/cap
- ☐ Soap & hand towel/sanitiser
- ☐ Tooth brush & toothpaste
- ☐ Warm jumper
- ☐ Small Bible, note book & pen
- ☐ Sleeping bag & sleeping mat
- ☐ Torch (small head torches are great) & spare batteries
- ☐ Puratabs/water filter
- ☐ Cooking billy, stove, fuel & matches
- ☐ Eating utensils, bowl & cup
- ☐ Trowel for toilet
- ☐ 4 Plastic bags for rubbish & wet clothes

- ☐ Compass
- ☐ Toilet paper (in a plastic bag)
- ☐ Handline (6-8mm nylon cord, approx 6-8m long)
- ☐ Gaiters

MANDATORY FIRST AID KIT

- ☐ 1 triangular bandage & safety pin
- ☐ 1 medium No 14 wound dressing
- ☐ 1 elasticized roller bandage (heavy weight- pink) with safety pin
- ☐ Assorted adhesive dressing strips
- ☐ Notebook and pencil (not pen)
- ☐ Personal medications if required
- ☐ UV sunscreen
- ☐ Insect repellent
- ☐ Jelly beans (from chemist)
- ☐ 5m roll of duct tape
- ☐ Any relevant medications
- ☐ 2 copies of your Medication Management Plan in individual zip lock bags.
- ☐ Emergency allergic reaction relief, ie. Epi Pen

MANDATORY GROUP ITEMS

- ☐ Radio (5watt)
- ☐ GPS
- ☐ Mobile Phone (turned off and in waterproof plastic bag)
- ☐ A small extra battery pack for your phone

SUGGESTED BOUNDARIES

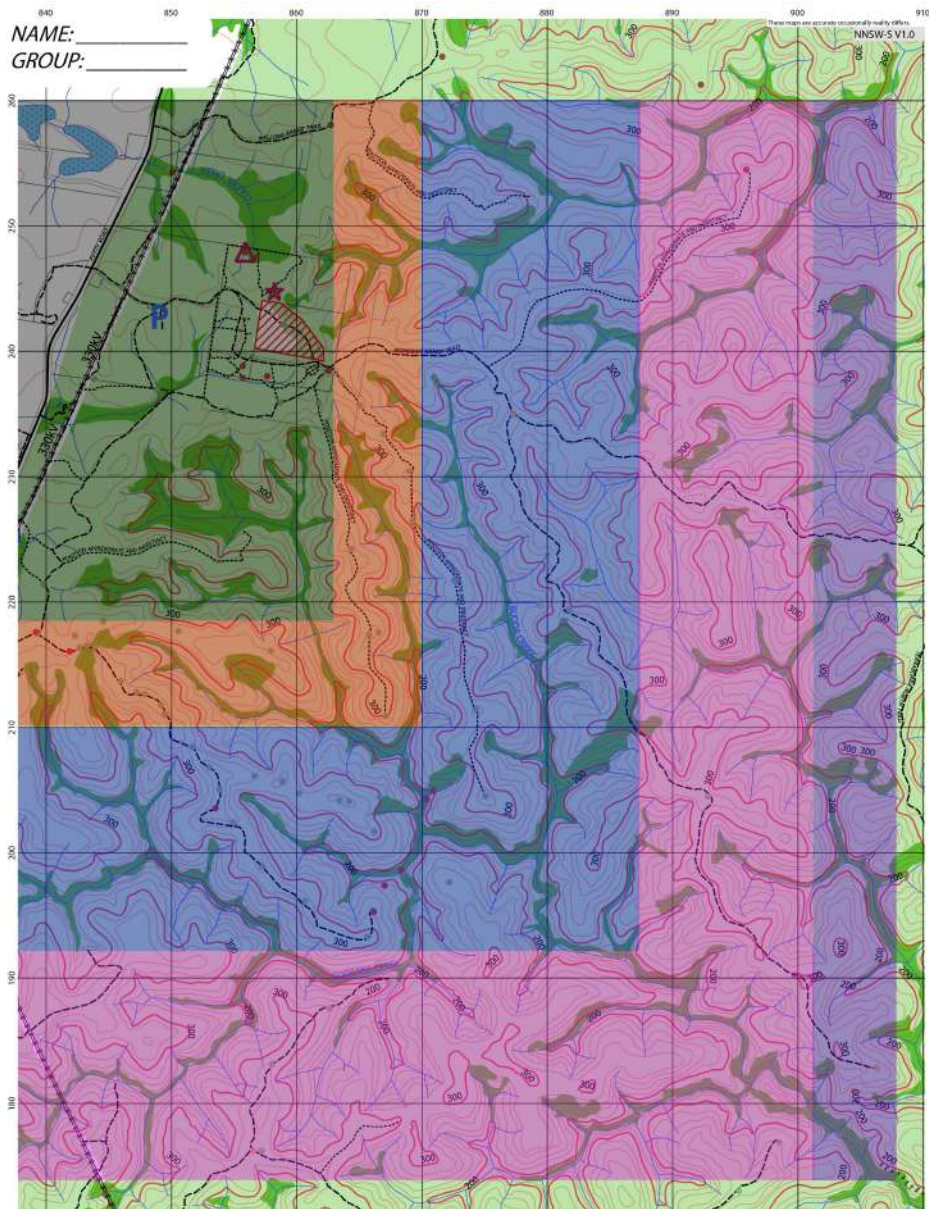
The Pathfinder Womerah Range Trail Expedition will differ from previous events, as it will not be a rogaining-style competition. This expedition will feature suggested walking routes based on the ability of each walking group. It is important that you, along with your club assess your group's walking skills and select the appropriate Walking Level.

Please remember that all walking groups are required to hike with a full backpack, including a tent, first aid kit, water, and meals. There will be NO 'base camp' for walking groups throughout the weekend. Each group must set up camp at a new location on Saturday, before sunset. Groups are not permitted to camp next to each other, a rule set by National Parks, and this will be monitored by Park Authorities.

Refer to the map on the following page for the boundaries of each walking group could possibly cover during the expedition. Your Club will need to make an informed decision regarding which route level your walking group is capable of completing. This map is only for the purpose of being inform your potential level's walking distances.

VARIOUS WALKING LEVELS

NAME: _____
GROUP: _____



Beginners = Black
Basic = Orange

Intermediate = Blue
Advance = Pink

Supper Callenge = Purple

PROGRAM

Friday Night 6 June 2025	
4.00-9.30pm	Check In Set up camp in Sub Camp
7.00pm	Opening Worship
10.00pm	Lights out
Sabbath 7 June 2025	
7.00am	Breakfast (No noise before this)
7.30am	Club morning worship (within clubs) Briefing session with Walking Group Leaders, Counsellors, Directors
8.00am	Pack up
9.00am	Morning Activities
9.45am	Main Worship
10.30am	Morning Tea/ Early Lunch
11.30pm	Official start for handing out Group Maps, & Groups check in Groups to close Sabbath in their walking groups Set Up Camp. This will be away from HQ. No one to camp within shaded property boundary on map
Sunday 8 June 2025	
1.00pm	Breakfast, pack up, leave, clean & go
3.00pm	De-registration Close camp

ON ARRIVAL

Upon arrival, please proceed to the HQ/Registration Desk to check in. We will confirm your allocation into a hiking group with your club and ensure your registration for the Expedition is complete.

After you check-in, you will be directed to the designated parking area where you can park your vehicle, unload your gear, and then proceed to the Sub Camp sites on foot.

A Sub Camp Director will guide you to your club's designated area for setting up tents. Please note that each participant must remain within their assigned Sub Camp.

Pit toilets will be made available near your Sub Camp. Additionally, you are required to bring a trowel for your toilet needs while hiking in the National Park. You'll need to bury your refuse and use toilet paper no more than 30cm deep.

PROUDLY BOUGHT TO YOU BY:



Seventh-day
Adventist Church™
Greater Sydney